

The image shows the interior of a modern restaurant. A prominent feature is a mezzanine level with a glass railing, illuminated from within. Below, a bar area is visible with a 'ROBBERY' sign and a menu board. The dining area has tables and chairs, and the ceiling is decorated with recessed lighting and pendant lights. The overall atmosphere is contemporary and sophisticated.

**O'HANLON  
& FARRELL**

PROJECTS POWERED BY

**O'HANLON & FARRELL**  
Electrical Contractors

# Contents:

Page 3 - **Services**

Page 4 - **Why O'Hanlon & Farrell**

Page 5 - **Projects Navigation (Click Buttons)**

Pages 6-13 - **Hospitality**

Pages 14-21 - **Residential**

Pages 22-29 - **Student Accommodation**

Page 30- **Commercial/Retail**

Page 31 - **Education/Healthcare**

Pages 32-33 - **Other Unique Projects**

Page 34 - **Brands Powered by OHF**

Page 35 - **Our Clients**

Page 36 - **Testimonials**

Page 37 - **Accreditations**

Page 38 - **Contact Details**

# Our Services

## Full Electrical Installation Including:

- ⇒ Operate in Diverse Sectors
- ⇒ Mains Distribution
- ⇒ External Lighting
- ⇒ Testing and Certification
- ⇒ Rewires/Refurbishment
- ⇒ Audio Visual/Satellite/TV Receiver Systems
- ⇒ Fire Alarms
- ⇒ CCTV
- ⇒ Feature Lighting
- ⇒ Office Lighting
- ⇒ Intruder Alarms
- ⇒ Video Door Entry Systems
- ⇒ Solar PV
- ⇒ AOV
- ⇒ EV Car Charging
- ⇒ Lightning Protection
- ⇒ Building Management Systems (BMS)

# Why O'Hanlon & Farrell?

**O'HANLON  
& FARRELL**

- Over 40 years of Quality Workmanship
- Highly experienced Management Team
- Delivers on Programme
- Impressive Project Portfolio across Diverse Sectors
- Collaborative Approach with Clients
- Health and Safety Focused
- Quality Produce at a Commercial Cost/Approach
- Successfully Secure Repeat Business

# Projects Navigation



# *HOSPITALITY*

O'Hanlon & Farrell have been heavily involved in the hospitality sector for over 40 years. During this time we have carried out high standard electrical packages in over 50 hotels throughout the United Kingdom and Ireland.

*Powering Beyond the Standard*



# The Marlin Hotel, Bow Lane, Dublin

Client: Marlin Hotels

Capacity: 300 Bedrooms

The demolition of existing commercial properties and the development of a new build landmark building as the first Marlin Hotel located in Ireland. The Marlin Hotel consists of 300 bedrooms across 6 floors with and 2 floors of basement car park and back of house facilities.

A very prestigious project with an extremely high-end standard of installation has been carried out in a collaborative team approach between the Design & Installation teams to exceed the Client's high expectations.






# Maldron Hotel, Park Lane, Liverpool

**Client: Dalata Hotels**  
**Capacity: 268 Bedrooms**

Park Lane Liverpool is a new build 268 Bedroom 4 star Maldron Hotel. Spread across 9 floors and configured to wrap around a bright internal courtyard, and extensive blue and green roofs incorporated into the design for an appealing visual. Park Lane was recently completed in May 2024 with the most recent technologies.

We are particularly proud to have completed our 8th Project for Dalata Group and look forward to further strengthening this successful relationship in the near future.

The scope of the works encompassed the full Electrical infrastructure via a 600 amp busbar installation providing power to the bedrooms, back of house & public areas, the complete Fire & Life Safety systems, back-up generator, communications, satellite receiver, general & emergency lighting controls systems.





## Staycity Hotel Frances Street, Dublin

Client: Staycity Hotels

Capacity: 246 Bedrooms

The construction of a 246-bedroom Staycity Aparthotel in Frances Street, Dublin includes a mixture of studios and one bed units featuring extensive guest facilities, a restaurant and an internal performance and exhibition centre.

The scope of the works encompassed the full Electrical infrastructure providing power to the bedrooms, back of house & public areas, the complete Fire & Life Safety systems, back-up generator, communications, satellite receiver, general & emergency lighting controls systems.



# The Maldron Hotel, Salford, Manchester

**Client: Dalata Hotels**

**Capacity: 188 Bedrooms**

The Maldron Hotel located in Salford, is a recently completed new build in April 2024. This particular hotel is 17-stories high, comprising 188-bedrooms branded as a Maldron Hotel, with landscaping and public realm works forming part of the project.

We are particularly proud to have carried out our seventh project for Dalata Group of Hotels and look forward to strengthening this successful relationship in the future.

The scope of the works encompassed the full Electrical infrastructure via a 600 amp busbar installation providing power to the bedrooms, back of house & public areas, the complete Fire & Life Safety systems, back-up generator, communications, satellite receiver, general & emergency lighting controls systems.



# MOXY HOTEL , Belfast

Client: Grant Fit Out

Capacity: 179 rooms

We proudly delivered the full electrical renovation works for the new Moxy Hotel Belfast, Northern Ireland. As specialist subcontractors, we upgraded the existing building with modern, energy-efficient electrical systems across 179 bedrooms, corridors, and vibrant social spaces including Bar Moxy, lounges, meeting areas, and the feature reception zone. Working within a tight city-Centre footprint, we ensured safe coordination, strict compliance, and smooth integration with the wider fit-out team. Our technical expertise and solution-focused approach helped bring this bold, contemporary hotel to life, enhancing performance, sustainability, and the overall guest experience.



O'HANLON  
& FARRELL





## Mixed Use Development Merrion Road, Dublin

Client: Dalata Hotels

Capacity: 140-bedroom 4-star Maldron Hotel, 69 No. High End Residential Units & 5 no. Townhouses

The new hotel consists of 8 storeys, with the residential block stepping from 7 to 4 storeys located to the west over a podium/basement car park, and the 5 no. townhouses spanning 3-storeys.

The scope of the works encompassed the full Electrical infrastructure via a 800 amp busbar installation providing power to the bedrooms, back of house & public areas, the complete Fire & Life Safety systems, back-up generator, communications, satellite receiver, general & emergency lighting controls systems.





Everard's Printing Works, Bristol

### HOSPITALITY AT A GLANCE!

Just a few more of our 50+ Hotels you may know,

For more info please visit:

[www.ohanlonfarrell.com](http://www.ohanlonfarrell.com)

O'HANLON & FARRELL



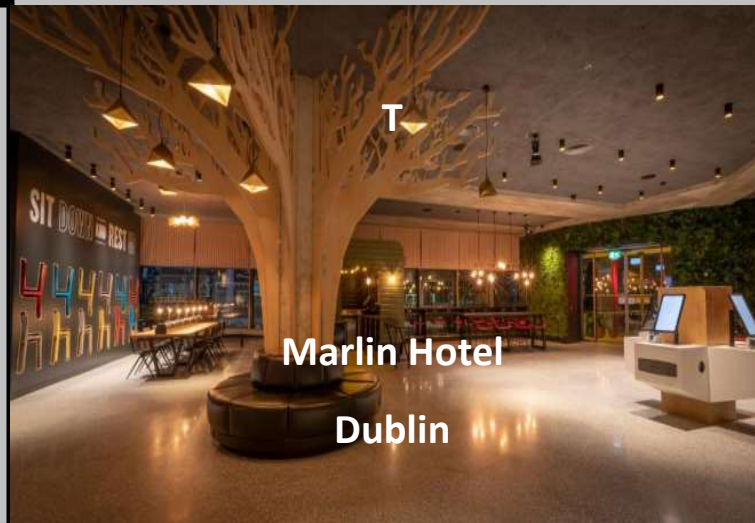
CLICK  
HERE



Moxy Hotel  
Belfast



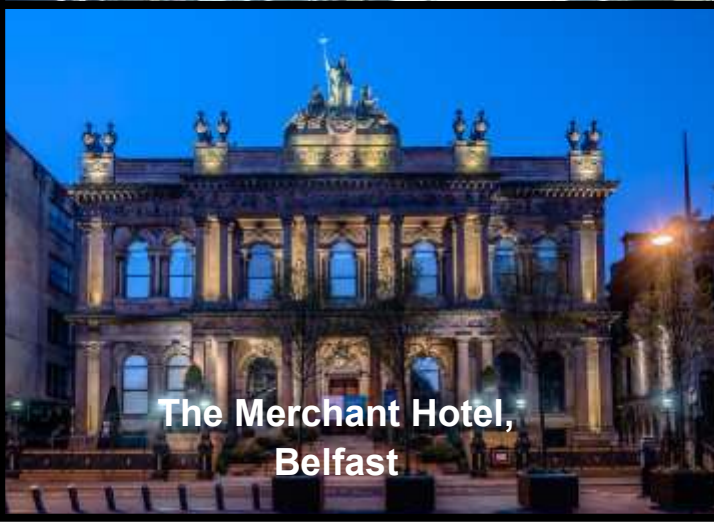
The Carlton Hotel,  
Edinburgh



Marlin Hotel  
Dublin



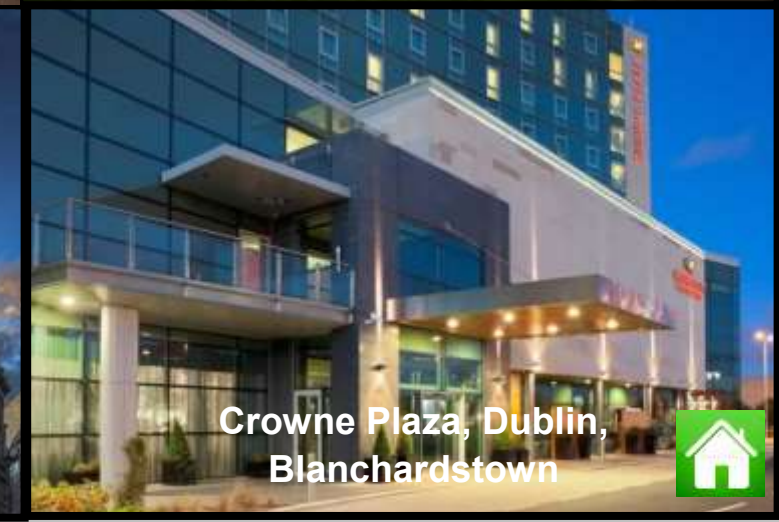
Clontarf Castle Hotel,  
Dublin



The Merchant Hotel,  
Belfast



The Hilton Hotel, The Trafalgar,  
St. James, London



Crowne Plaza, Dublin,  
Blanchardstown



# ***RESIDENTIAL***

O'Hanlon & Farrell have completed the Full Electrical Installation on over 100 Apartment and Housing projects. During these times, always providing a high quality service to its clients.

***Delivering Electrical Solutions***





## Exchange Square Amenity, Birmingham

**Client: Nikal**

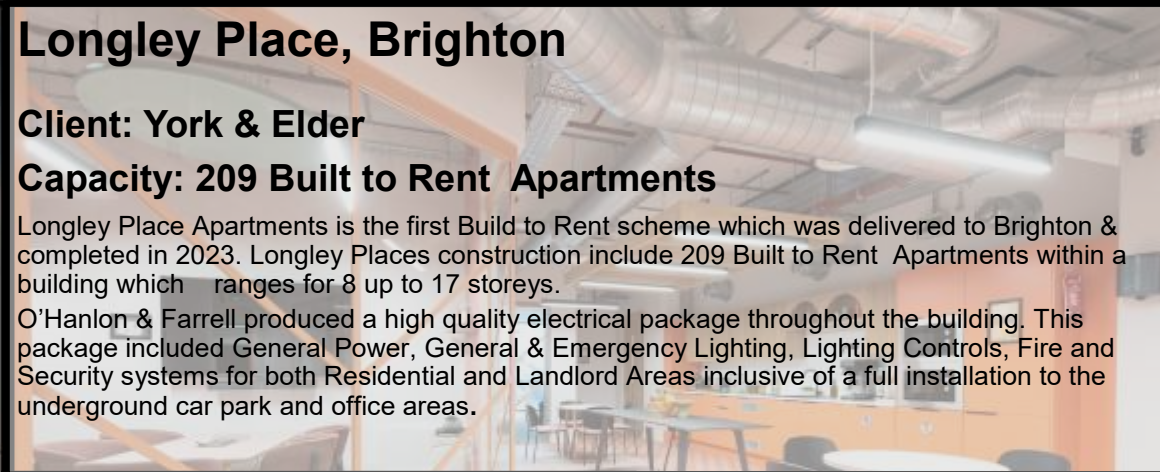
**Capacity: 375 Build to Rent Apartments**

Just completed in March 2024 this newly build landmark 34-storey (106m) residential tower that will be the tallest on the brownfield city-centre site, to comprise 375 Build to Rent Apartments in a range of studio, 1, 2 and 3-bed units, Ground Floor Retail Space, Underground Car Park & Communal Roof Garden.

The project encompassed a Full Electrical Infrastructure, inclusive of but not limited to Life Safety, Communications, General & Emergency Lighting systems to the 375 Apartments, Landlord & Public Areas.

The construction of Phase 2 of Exchange Square in Birmingham city centre as the latest element to the larger Masshouse redevelopment by developer Nikal.





# Longley Place, Brighton

**Client: York & Elder**

**Capacity: 209 Built to Rent Apartments**

Longley Place Apartments is the first Built to Rent scheme which was delivered to Brighton & completed in 2023. Longley Places construction include 209 Built to Rent Apartments within a building which ranges for 8 up to 17 storeys.

O'Hanlon & Farrell produced a high quality electrical package throughout the building. This package included General Power, General & Emergency Lighting, Lighting Controls, Fire and Security systems for both Residential and Landlord Areas inclusive of a full installation to the underground car park and office areas.





## Niche Living , Merrion Road, Ballsbridge

**Client: Townlink**

**Capacity: 98 bed with Communal resident amenities**

O'Hanlon & Farrell were delighted to deliver the full electrical installation for the Niche Living Merrion Road shared-living development in Ballsbridge. This high-quality residential scheme spans 3,617 sq.m across part 3- to 5-storey levels over a lower-ground/basement structure, providing 98 bedrooms supported by premium communal amenities. Our works covered complete electrical infrastructure, energy-efficient lighting, life-safety systems, containment, and power distribution throughout the gymnasium, TV/cinema room, launderette, linen store, bicycle parking areas, and the rooftop terrace.



# Wyckham Point, Sandyford, Dublin

**Client: Hibernia**

**Capacity: 250 Apartments**

O'Hanlon & Farrell successfully delivered this stunning apartment complex in Dublin. This consisted of 250 high end apartments in a sought after area of the city.

The development also comprised a mix of ancillary accommodation including but not limited to Reception, Creche, Leisure suite & Gym.





# The Weir, Whitestown Way, Tallaght, Dublin

**Client: Clúid Housing**

**Capacity: 81 Apartments**

Recently completed in May 2024, the development delivered in two phases included the construction of modern residential buildings with the inclusion of 48 balconies.

The contract included the development of communal spaces including an exercise area, reception, offices and courtyards.

Phase 2 of the work saw the completion of public realm enhancements including roadways, street lighting, ponds with aquatic planting and wild-flower planting.



**clúid  
housing**



# Titanic Quarter Apartments, Belfast

**Client: Titanic Quarter**

**Capacity: 474 Prestigious Apartments**

Located in the heart of Titanic Quarter, Belfast this highly specified mixed use development included electrical installations to office blocks & accommodation areas.

The project comprised works to 474 high quality stylish apartments, en-suites, entrance area, communal areas, office areas, break-out areas, conferencing facilities & boardrooms.

The duration for the this phase of the project was approximately 72 weeks.





Corkagh Grange,  
Clondalkin, Dublin

**RESIDENTIAL AT A GLANCE!**

For more info

please visit [www.ohanlonfarrell.com](http://www.ohanlonfarrell.com)



**CLICK  
HERE!**



Wyckham Point  
Sandyford, Dublin



St Edmunds Apart-  
ments, Lucan, Dublin



Lansdowne Road Apartments,  
Trinity, Dublin



Terrace Mount Apartments,  
Bournemouth



The Grange  
Apartments, Dublin



St Finbarr's Apartments



Merrion Road Apartments,  
Dublin





# ***STUDENT ACCOMMODATION***

O'Hanlon & Farrell have successfully delivered a considerable number of diverse Student Accommodation Projects throughout the UK, and now commencing similar in Ireland.

*Commitment To Quality*





## St Crispin's, Norwich

**Client: Yugo Student Accommodation**

**Capacity: 684 Bedrooms**

Refurbishment and extension of the former 1970s office building, St Crispin's House in Norwich city centre to create a 684-bedroom student accommodation development.

The works completed October 2023 & comprise of the strip-out to shell & core of the former building, retaining the existing structure and constructing an additional 2 floors transforming into a 7-storey building with a 5-storey extension to the rear.





## Cannon Park, Coventry

Client: Vita Student Accommodation

Capacity: 780 Bedrooms

The redevelopment of a surface car park to transform into a high quality new student accommodation development which will comprise 780 beds, generous common areas, a landscaped courtyard and an MSCP providing 400 spaces.

The student building ranges from 6-storeys in the centre, stepping down to 2-storeys at the boundary of the site. The new multi storey car park is encased on three sides by the student housing to help reduce its impact. Completed 2023.





**Newgate Development, Newcastle**  
**Client: Unite Students Accommodation & Maldron Hotels**  
**Capacity: 575 Student Bedrooms & 269 Hotel Bedrooms**

This new-build mixed-use development incorporates a new Maldron Hotel and Student Accommodation. O'Hanlon & Farrell completed the electrical installation to both the new Maldron Hotel and the new Student Accommodation completing 575 bedrooms along with electrical installation to the new Maldron Hotel consisting of 269 bedrooms, ensuites & communal areas.



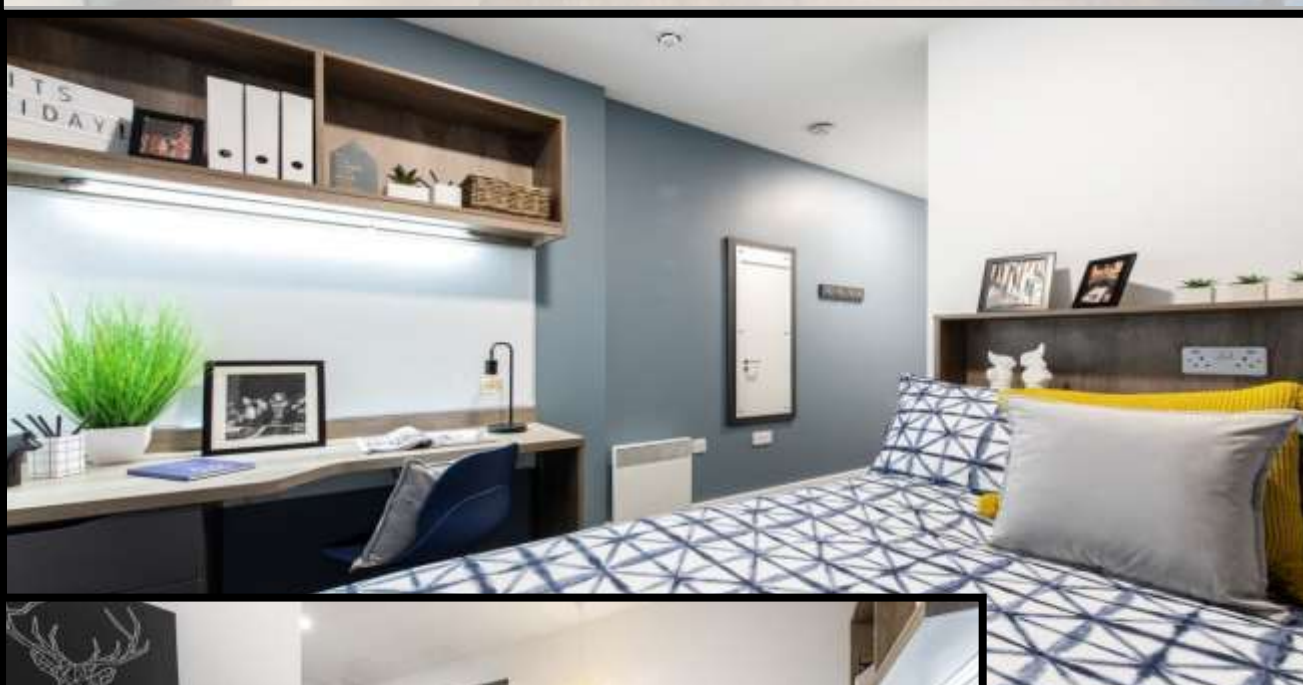
# Bailey Point, Lansdowne Road, Bournemouth Student Accommodation

Client: GSA

Capacity: 550 bedrooms

O'Hanlon & Farrell successfully delivered this student accommodation project at Lansdowne Road, Bournemouth. This consisted of a 550 bed 14 storeys slender tower student accommodation building. The development largely comprises a mix of ancillary accommodation including but not limited to Reception, Common Room, Cycle storage, plant pace, and laundry & bin storage.

O'HANLON & FARRELL



# Belaton House, Holdenhurst Road, Bournemouth

Client: Yugo Student Accommodation

Capacity: 403 Bedrooms

O'Hanlon & Farrell achieved completion on this cost effective 8 storey student accommodation building with one level basement at Holdenhurst Road, Bournemouth.

This project also included fitting out the Reception Area, Common Rooms, Cycle storage, plant space, laundry & bin storage.



# Fusion Upper Duke Street Student Living, Liverpool

**Client: McAleer Rushe**

**Capacity: 420 Rooms**

O'Hanlon & Farrell successfully delivered the full electrical installation package for Fusion Group's new 420-bed purpose-built student accommodation scheme in Liverpool. Working alongside McAleer & Rushe, we completed all electrical infrastructure, containment, power distribution, life-safety systems and high-efficiency lighting across the seven-storey development. The building includes premium amenities such as a recording studio, half basketball court, fitness studio, library, zero-waste shop, landscaped courtyards and dedicated study areas. Designed to achieve a BREEAM Very Good rating, the project incorporated off-site manufacturing for improved efficiency and reduced carbon impact. Our team ensured safe, compliant and high-quality delivery, contributing to a modern, sustainable and future-ready student living environment.



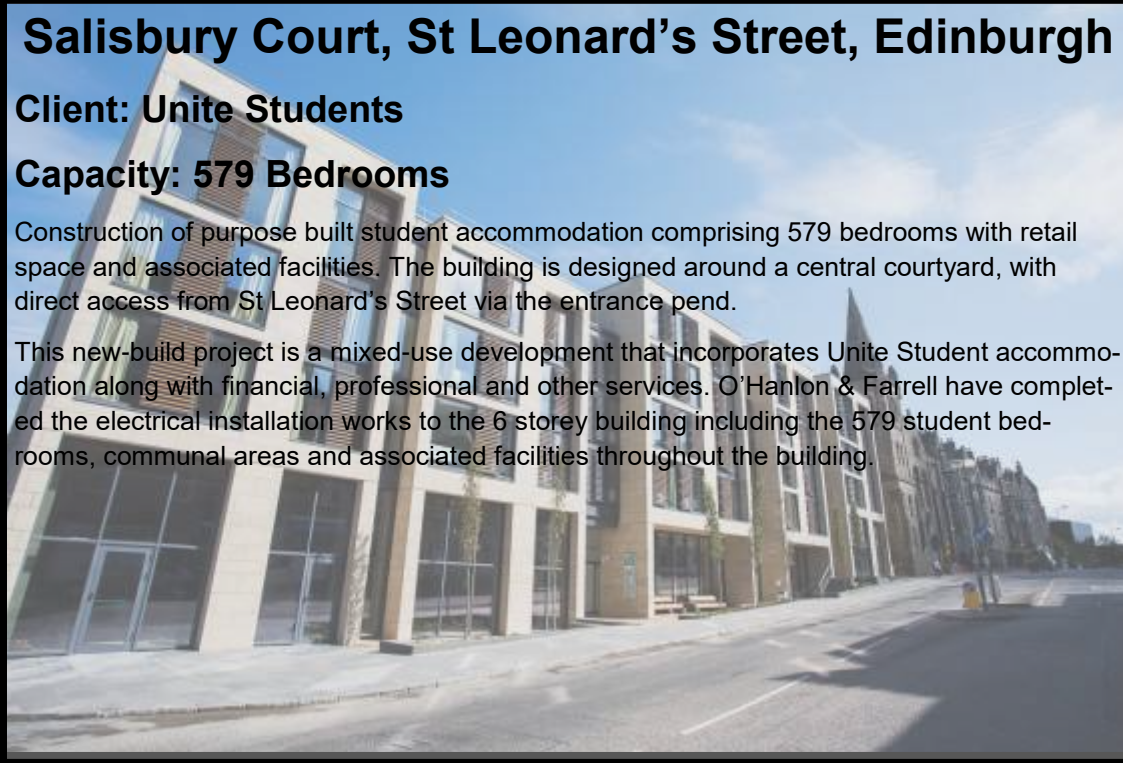
# Salisbury Court, St Leonard's Street, Edinburgh

**Client: Unite Students**

**Capacity: 579 Bedrooms**

Construction of purpose built student accommodation comprising 579 bedrooms with retail space and associated facilities. The building is designed around a central courtyard, with direct access from St Leonard's Street via the entrance pend.

This new-build project is a mixed-use development that incorporates Unite Student accommodation along with financial, professional and other services. O'Hanlon & Farrell have completed the electrical installation works to the 6 storey building including the 579 student bedrooms, communal areas and associated facilities throughout the building.





Mixed Development,  
Bradford

**COMMERCIAL/ RETAIL Projects at a  
Glance!**

For more info  
please visit [www.ohanlonfarrell.com](http://www.ohanlonfarrell.com)



Dublin Airport  
Authority, Dublin



Drogheda Civic Centre, County  
Louth, Ireland



St. James Gate,  
Newcastle



City View, Brighton



Citibank Offices, Belfast,  
N. Ireland



Northern Ireland Blood  
Transfusion Headquarters,  
Belfast



Kingram House Offices, Dublin





**Brooklands Nursing &  
Respite Centre, Antrim**

## EDUCATION/HEALTHCARE

**projects at a Glance!**

For more info please visit  
[www.ohanlonfarrell.com](http://www.ohanlonfarrell.com)



**St Marys Primary School,  
Newcastle, N Ireland**



**Our Lady of Lourdes  
Hospital, Drogheda**



**Craigavon Area Hospital,  
Northern Ireland**



**Magherafelt Primary School,  
Magherafelt N. Ireland**



**Royal Belfast Hospital for  
Sick Children, Belfast**



**Orchard Building, Stranmillis  
University College, Belfast**



**Bush Post Primary School,  
Co Louth, Ireland**



# Some of our More UNIQUE Projects!

O'Hanlon & Farrell have completed Electrical Installation in Diverse Sectors, including commercial, industrial, educational, healthcare, leisure etc. Always delivering High Quality Products, on Programme & within Client's Budget

*Safety First*





# Emerald Park, Co. Meath, Ireland

Client: Emerald Park

Capacity: Installations over 2 Years, including New Rollercoaster & Upgrades

Works include an upgrade to the full Electrical Infrastructure to facilitate expansion of the site and systems.

O'H&F have a long-term presence carrying out upgrades and general maintenance across the site.





Leisure Centre, Banbridge,  
N. Ireland

## UNIQUE/OTHER projects at a Glance!

For more info please visit  
[www.ohanlonfarrell.com](http://www.ohanlonfarrell.com)



Swimming Pool & Leisure  
Centre, Lisburn, N. Ireland



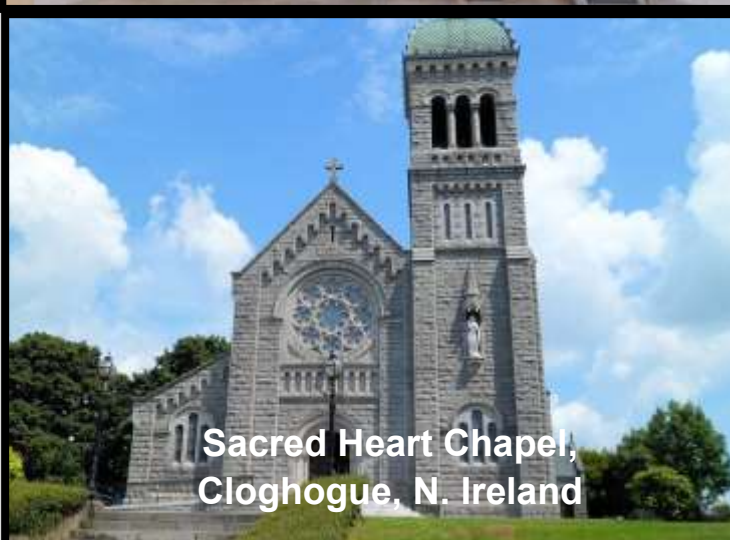
St Luke's Church,  
Dublin



Ozone Complex, Indoor Tennis  
Centre, Belfast



Leisure Centre,  
Drogheda, Ireland



Sacred Heart Chapel,  
Cloghogue, N. Ireland



Glen Community Centre,  
Belfast



Tollymore Mountain Centre,  
Newcastle, N. Ireland





Northern Ireland  
Blood Transfusion Service

# BRANDS POWERED by OHF!

A few of our Ultimate Clients we have delivered complete Electrical Installation via Construction Contractors & Directly across the UK and Ireland.



# Some of Our CLIENTS

## Working In Partnership

We have successfully delivered complete Electrical Installation works for several leading construction contractors and clients operating across the UK and Ireland.



# WHAT OUR CLIENTS SAY:

*“O’Hanlon & Farrell have been contracted as Electrical Subcontractors by our company for more than 30 years. We can confirm Electrical Subcontract works were delivered in accordance with the contract programme on time and within budget.”*

**Eamon Higgins, Finance Director  
McAleeer & Rushe Ltd**



*“Fantastic achievement that your business has remained committed to delivering electrical safety to your customers and your registration with us is a mark to be proud of.*

*It has been a pleasure to work alongside you all these years and we look forward to continuing to support your business for many more years to come.”*

**NICEIC**



*“O’Hanlon & Farrell delivered on time and on budget when other subcontractors failed to perform on this difficult Project.*

*Routinely 4.8/5 Ratings Achieved from Caldwell Consulting”*

**Marc Burns, Director  
Caldwell Consultancy**



*“Working closely with the Emerald Park, O’Hanlon & Farrell’s Team fully engaged with the project to deliver a high quality electrical installation while always considering the measures necessary to work safely within the Theme Park environment. We would not hesitate to recommend O’Hanlon & Farrell for electrical installation work.”*

**Roy Plunkett, Maintenance Manager,  
Emerald Park**





WITH EXPERIENCE  
COMES UNDERSTANDING  
WHICH CREATES INNOVATION



# O'HANLON & FARRELL

7 Springhill Road, Newry, BT35 6EF, Northern Ireland

Head Office: (+44) 28 302 69213

E-mail: [info@ohanlonfarrell.com](mailto:info@ohanlonfarrell.com)

[estimating@ohanlonfarrell.com](mailto:estimating@ohanlonfarrell.com)

